

PROVIDENCE, R. I.  
CITY ENGINEER'S OFFICE  
STREET LINE DEPT.

Oct. 20, 1888

014414

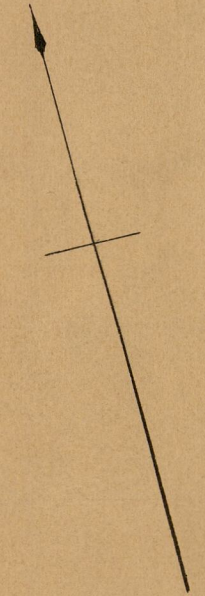
Providence R.I.  
This plat accompanies  
our report of this date.

PLAT OF  
**SULLIVAN STREET**  
FROM PUBLIC ST. TO HAMILTON ST.  
IN TWO SHEETS  
SCALE 40 FEET PER INCH.

813.72

83  
B-32

Changed to Stanwood St. Aug. 4, 1892.

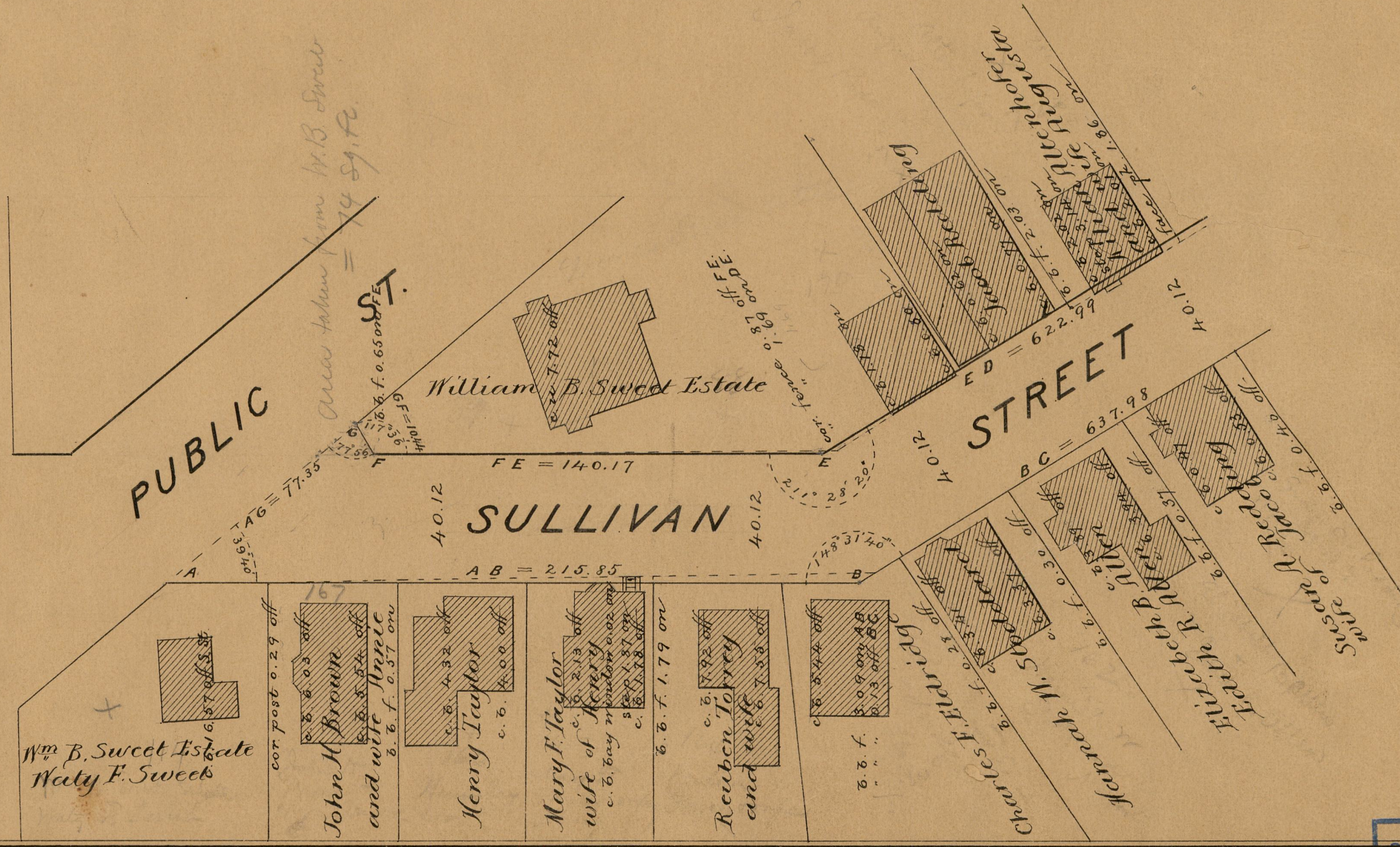


GREENWICH ST.

PUBLIC ST.

SULLIVAN STREET

STREET



OFFICE No. 9857  
DRAWER 83  
SHEET B

83  
B-32